


## Mouse Sonic Hedgehog Protein

Cat #: PRP1132

Size: 10µg/50µg/1mg

### Product Information

	<b>Product Name:</b> Mouse Sonic Hedgehog Protein		
<b>REF</b>	<b>Catalog Number:</b> PRP1132	<b>LOT</b>	<b>Lot Number:</b> Refer to product label
	<b>Purity:</b> > 96 % as determined by SDS-PAGE		
	<b>Storage:</b> Store at -20°C		<b>Preparation method:</b> E. coli
	<b>Shipping:</b> The product is shipped at ambient temperature.		

**Background:** Mouse Sonic Hedgehog (SHH) belongs to a three-protein family called Hedgehog. The other two family members are Indian Hedgehog (IHH) and Desert Hedgehog (DHH). Hedgehog proteins are key signaling molecules in embryonic development. SHH is expressed in various embryonic tissues and plays critical roles in regulating the patterning of many systems, such as limbs and brain. SHH also plays an important role in adult, including the division of adult stem cells and the development of certain cancers and other diseases. Mouse SHH is synthesized as a 437 aa precursor that contains a 24 aa signal sequence and a 413 aa mature region. The mature region is autocatalytically processed into a nonglycosylated, 20 kDa, 174 aa N-terminal fragment (SHH-N), and a catalytic-processing, glycosylated, 34 kDa, 239 aa C-terminal fragment.

**Sequence:** Amino acid sequence derived from Mouse SHH (Q62226) (Cys25-Gly198) was expressed.

**Protein length:** The recombinant Mouse SHH consists of 174 amino acids and has a predicted molecular mass of 19.8 kDa.

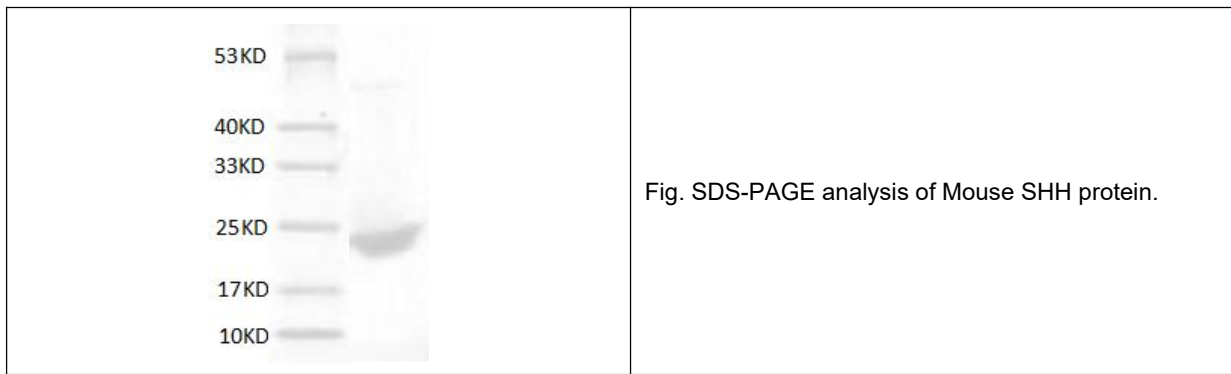
**Biological Activity:** Testing in progress.

**Endotoxin:** < 0.1 EU per µg of the protein as determined by the LAL method.

**Formulation:** Lyophilized from sterile PBS, pH 7.4.

**Storage Instructions:** Lyophilized Mouse SHH protein product should be stored desiccated below -20°C. Upon reconstitution, the protein should be stored at 4°C between 2-7 days and for future use below -20°C. For long term storage it is recommended to add a carrier protein (0.1% HSA or BSA). Please prevent freeze-thaw cycles.

**Usage notes:** Always centrifuge tubes before opening. It is recommended to reconstitute the lyophilized Mouse SHH protein using the buffer we provided not less than 100µg/ml, which can then be further diluted to other aqueous solutions.



**Note:** The product listed herein is for research use only and is not intended for use in human or clinical diagnosis. Suggested applications of our products are not recommendations to use our products in violation of any patent or as a license. We cannot be responsible for patent infringements or other violations that may occur with the use of this product.